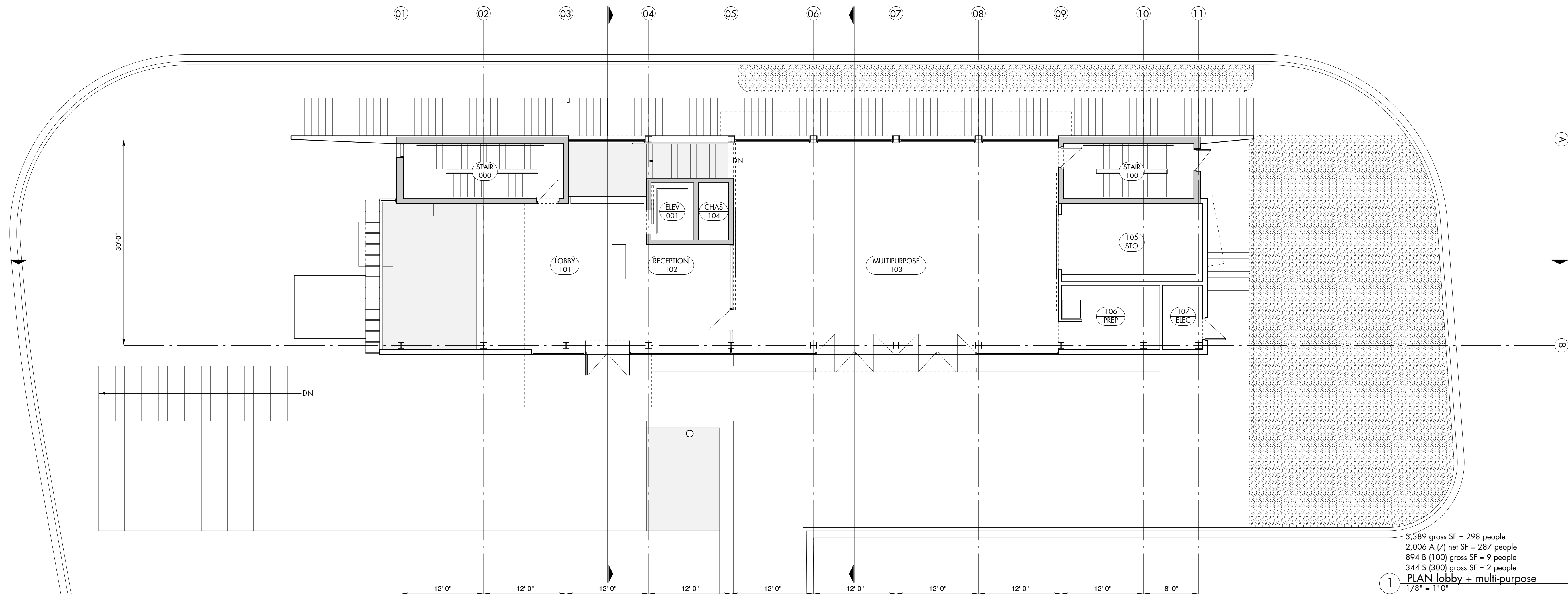
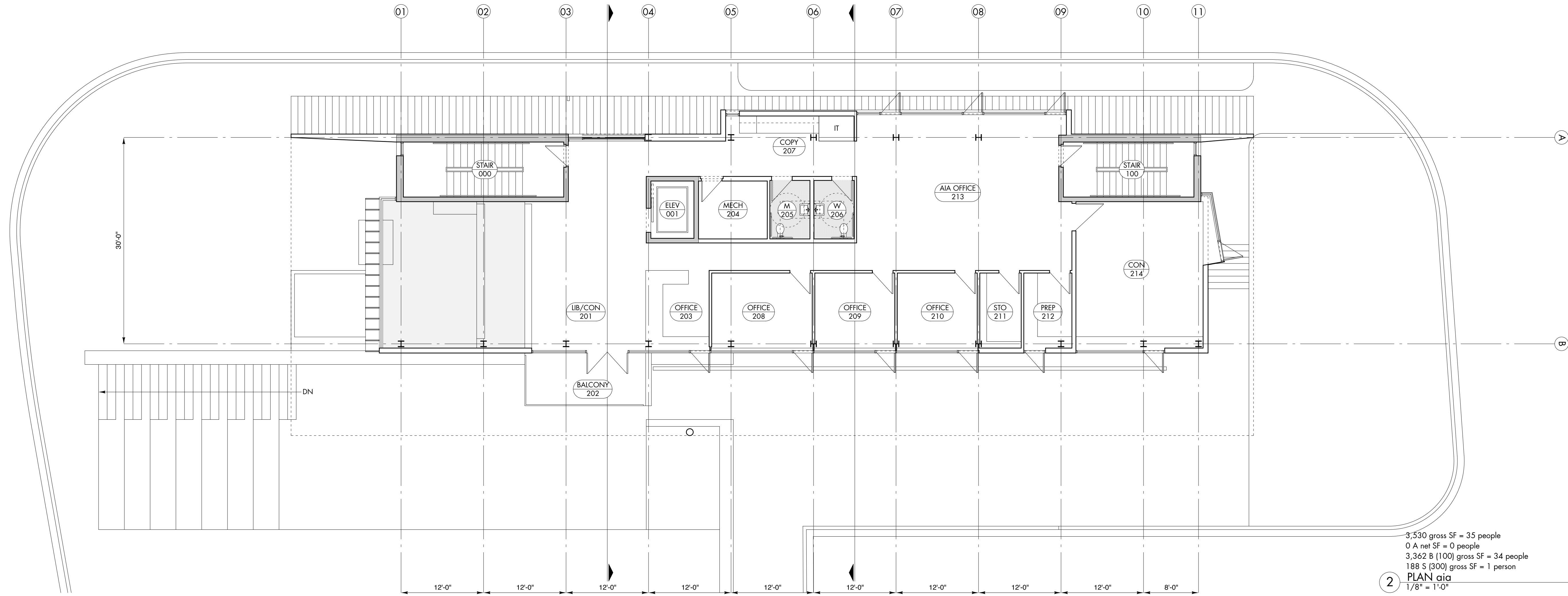


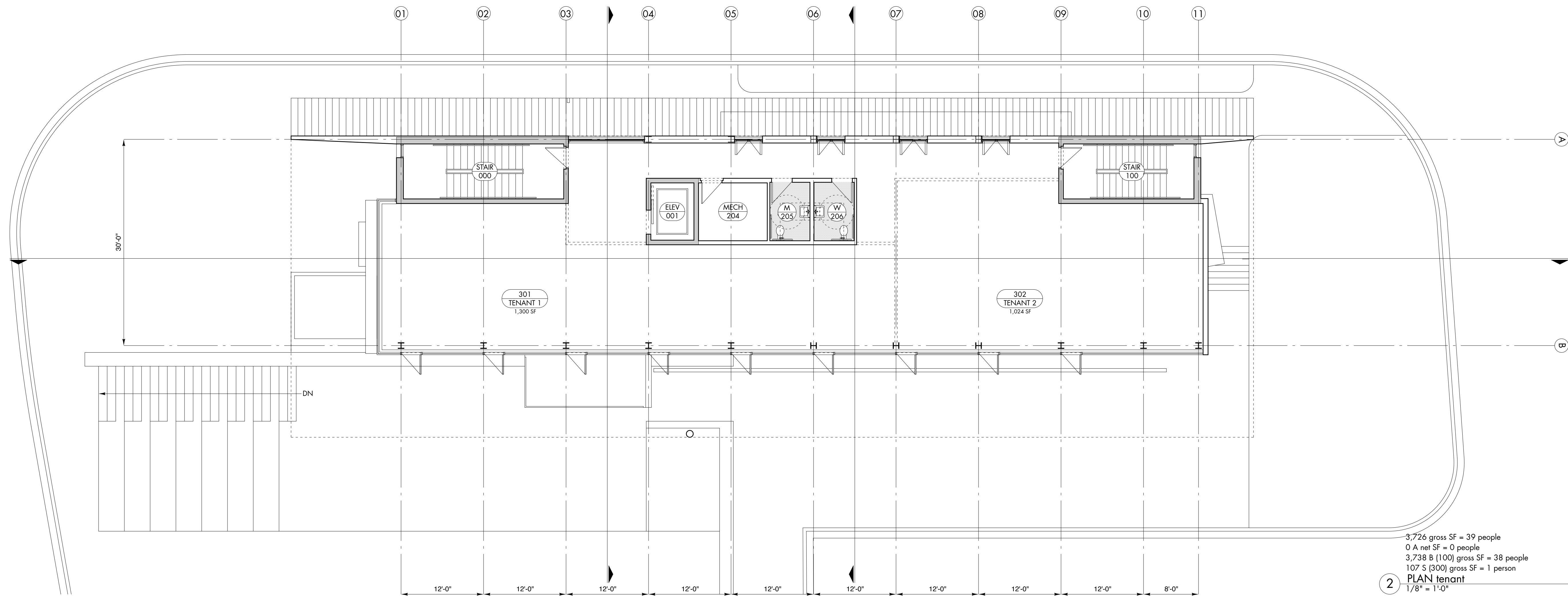
2,083 gross SF = 122 people  
 779 A (7) net SF = 112 people  
 800 B (100) gross SF = 8 people  
 488 S (300) gross SF = 2 people  
**PLAN cafe + exhibit**  
 1/8" = 1'-0"



3,389 gross SF = 298 people  
 2,006 A (7) net SF = 287 people  
 894 B (100) gross SF = 9 people  
 344 S (300) gross SF = 2 people  
**PLAN lobby + multi-purpose**  
 1/8" = 1'-0"



3,530 gross SF = 35 people  
 0 A net SF = 0 people  
 3,362 B (100) gross SF = 34 people  
 188 S (300) gross SF = 1 person  
**PLAN aia**  
 1/8" = 1'-0"



3,726 gross SF = 39 people  
 0 A net SF = 0 people  
 3,738 B (100) gross SF = 38 people  
 107 S (300) gross SF = 1 person  
**PLAN tenant**  
 1/8" = 1'-0"

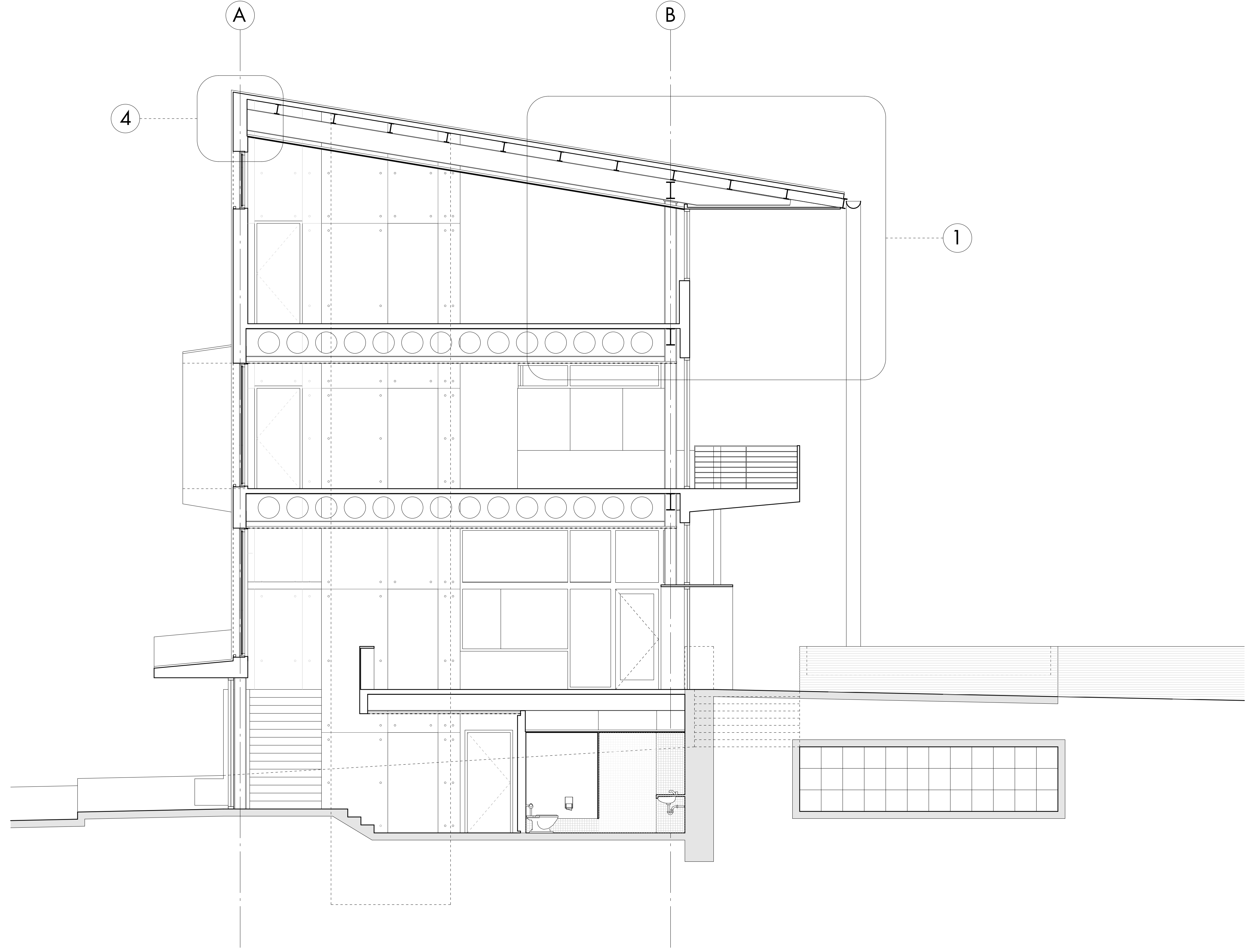
374'-7 3/4"  
TOP OF CONSTRUCTION

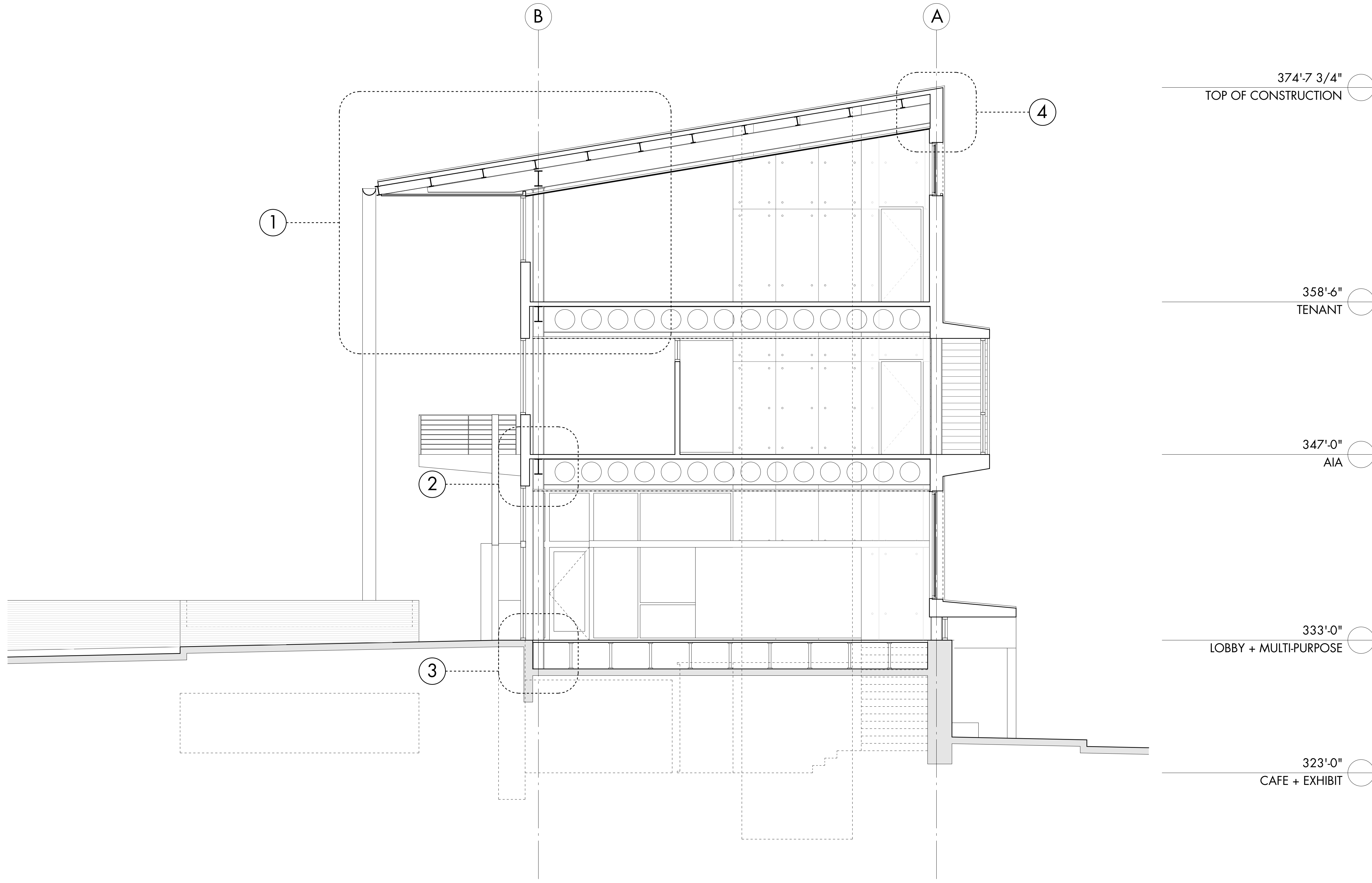
358'-6"  
TENANT

347'-0"  
AIA

333'-0"  
LOBBY + MULTI-PURPOSE

323'-0"  
CAFE + EXHIBIT





374'-7 3/4"  
TOP OF CONSTRUCTION

358'-6"  
TENANT

347'-0"  
AIA

333'-0"  
LOBBY + MULTIPURPOSE

323'-0"  
CAFE + EXHIBIT

3.1 ARCHITECTURAL CONCRETE

4.1 STONE

5.1 GREEN SCREEN

6.1 CLEAR FINISH PLYWOOD

6.2 SHIP LAP WOOD SIDING

6.3 CEMENTITIOUS PANEL

7.1 STANDING SEAM METAL PANELS

7.2 METAL GUTTER

7.3 METAL SUN SCREEN

8.1 STORE FRONT WINDOWS AND DOORS

8.2 404.5.1 SINGLE PANE GLASS BARRIER

9.1 PAINTED DRYWALL

9.2 CERAMIC TILE

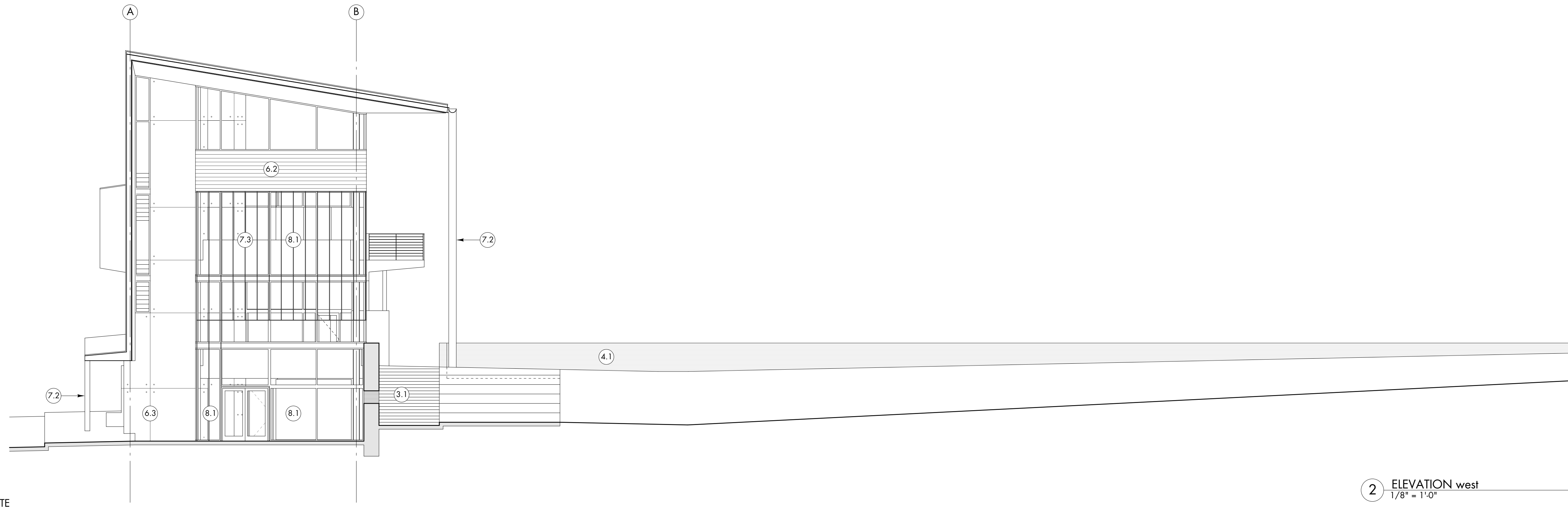
374'-7 3/4"  
TOP OF CONSTRUCTION

358'-6"  
TENANT

347'-0"  
AIA

333'-0"  
LOBBY + MULTIPURPOSE

323'-0"  
CAFE + EXHIBIT



2 ELEVATION west  
1/8" = 1'-0"

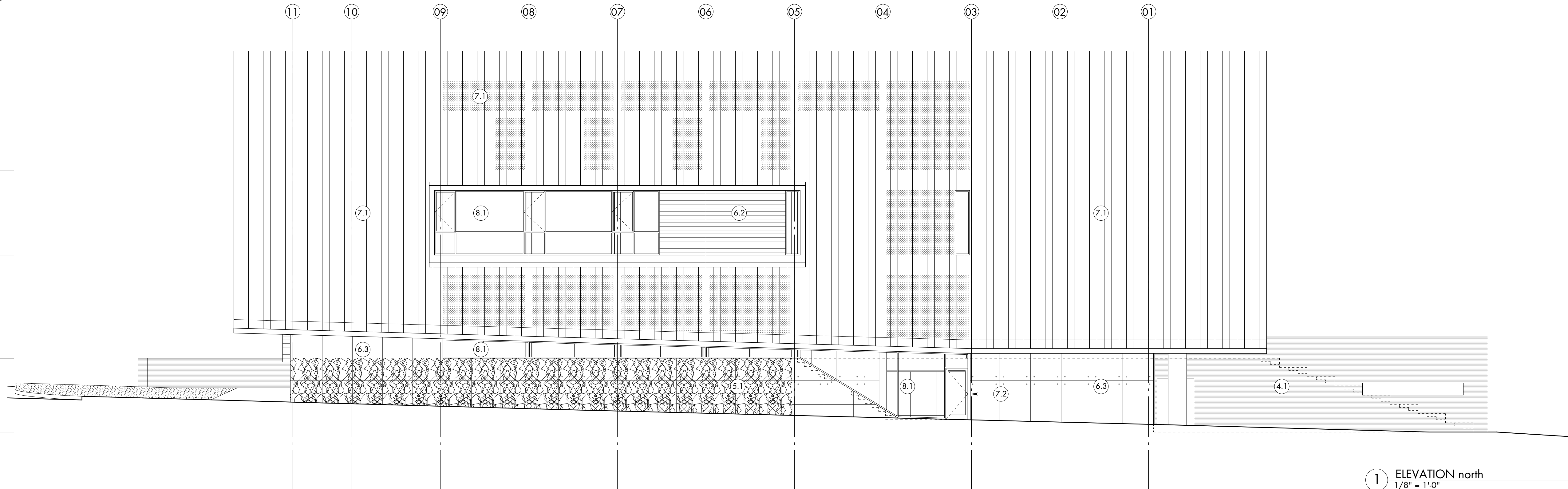
374'-7 3/4"  
TOP OF CONSTRUCTION

358'-6"  
TENANT

347'-0"  
AIA

333'-0"  
LOBBY + MULTIPURPOSE

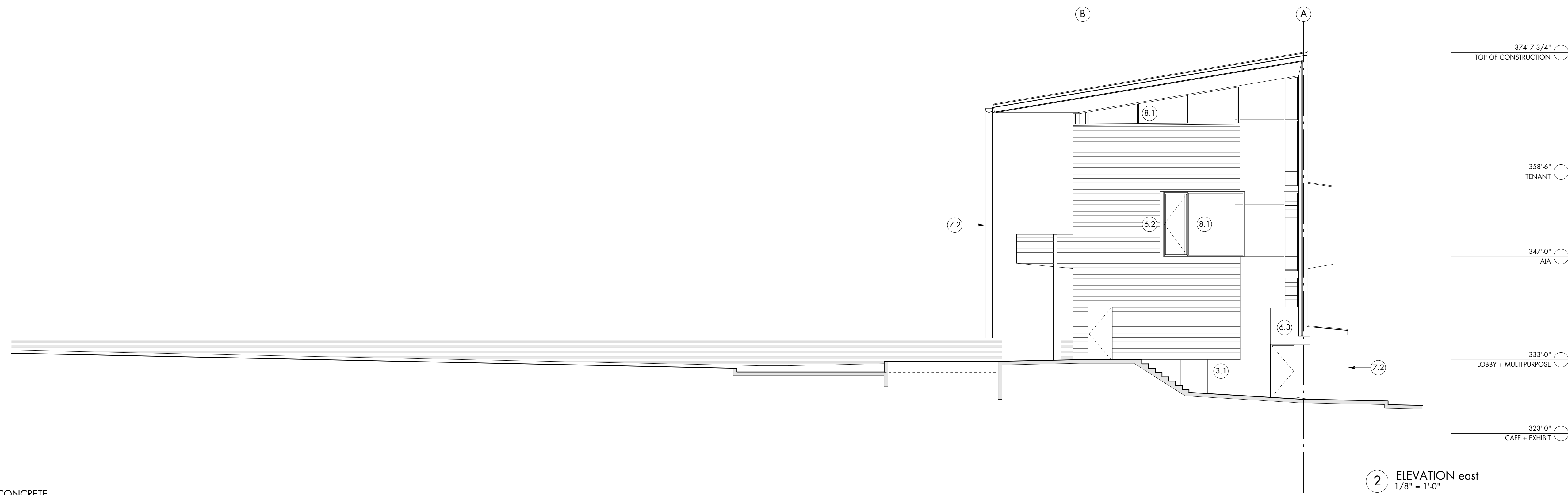
323'-0"  
CAFE + EXHIBIT



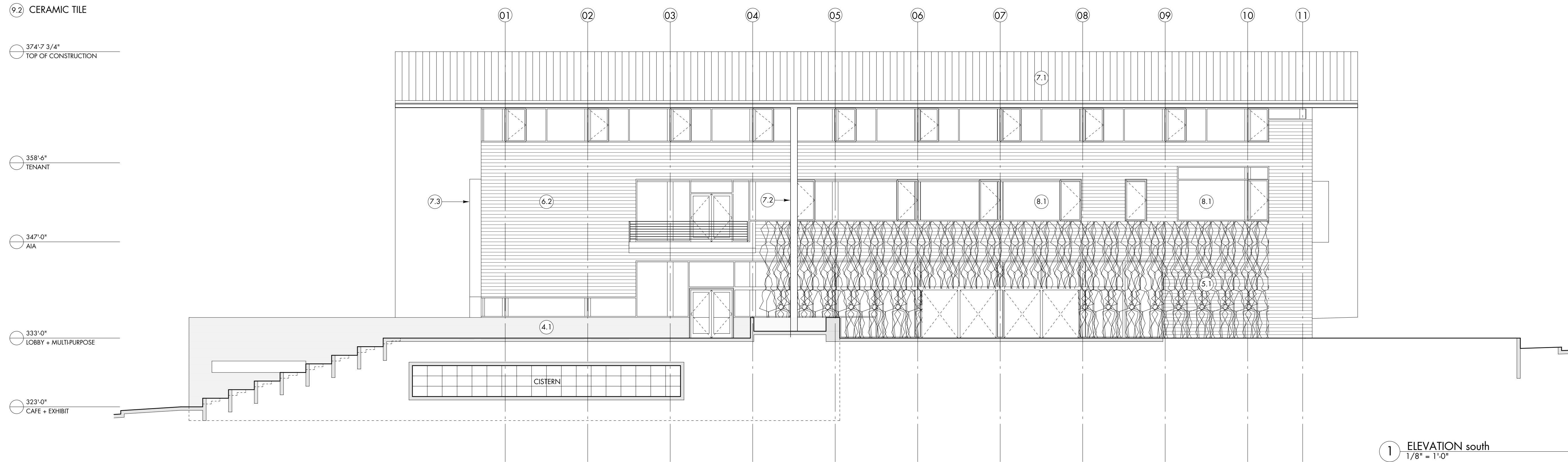
1 ELEVATION north  
1/8" = 1'-0"

- ③.1 ARCHITECTURAL CONCRETE
- ④.1 STONE
- ⑤.1 GREEN SCREEN
- ⑥.1 CLEAR FINISH PLYWOOD
- ⑥.2 SHIP LAP WOOD SIDING
- ⑥.3 CEMENTITIOUS PANEL
- ⑦.1 STANDING SEAM METAL PANELS
- ⑦.2 METAL GUTTER
- ⑦.3 METAL SUN SCREEN
- ⑧.1 STORE FRONT WINDOWS AND DOORS
- ⑧.2 404.5.1 SINGLE PANE GLASS BARRIER
- ⑨.1 PAINTED DRYWALL
- ⑨.2 CERAMIC TILE

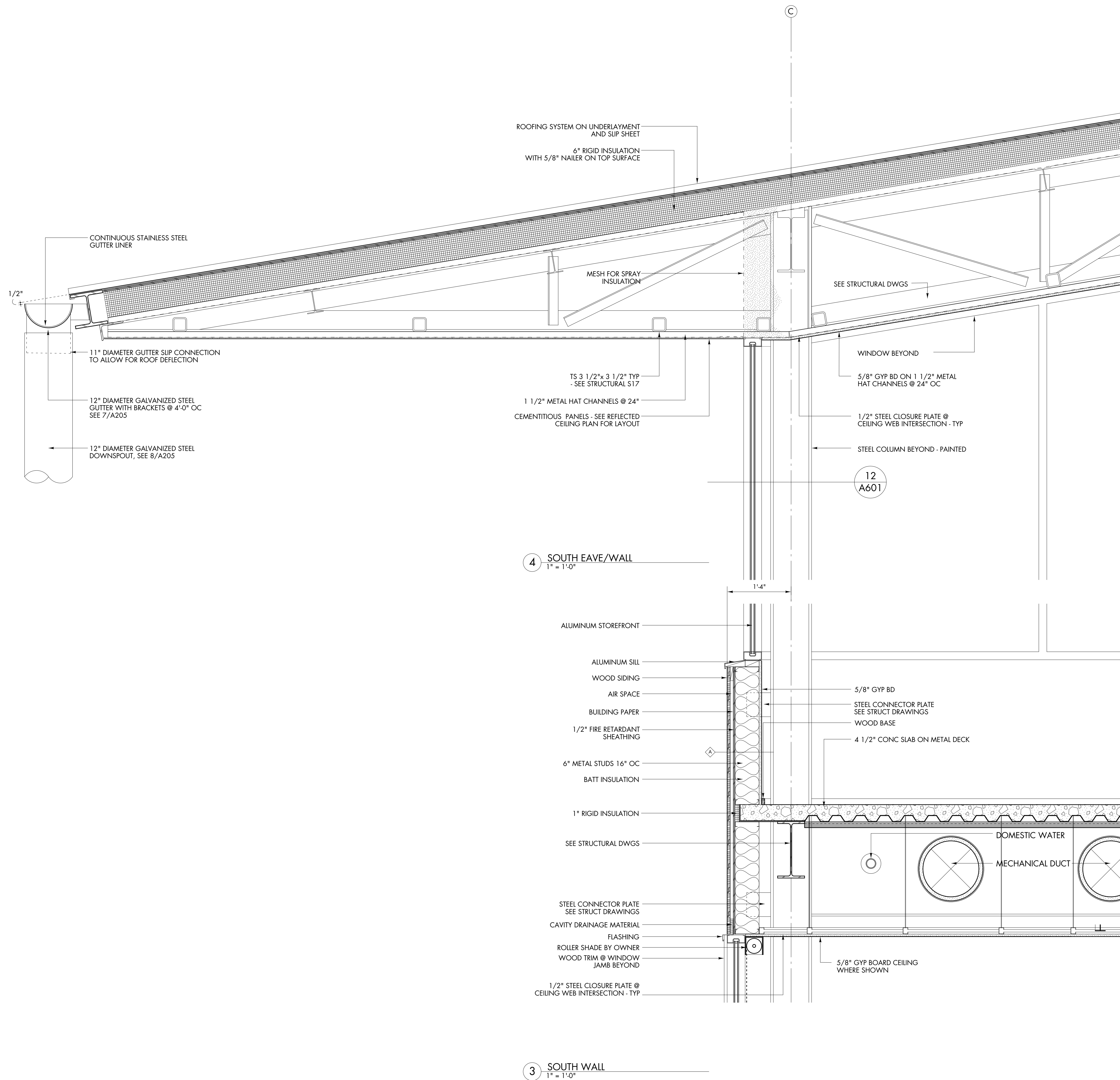
- 374'-7 3/4"  
TOP OF CONSTRUCTION
- 358'-6"  
TENANT
- 347'-0"  
AIA
- 333'-0"  
LOBBY + MULTIPURPOSE
- 323'-0"  
CAFE + EXHIBIT



② ELEVATION east  
1/8" = 1'-0"

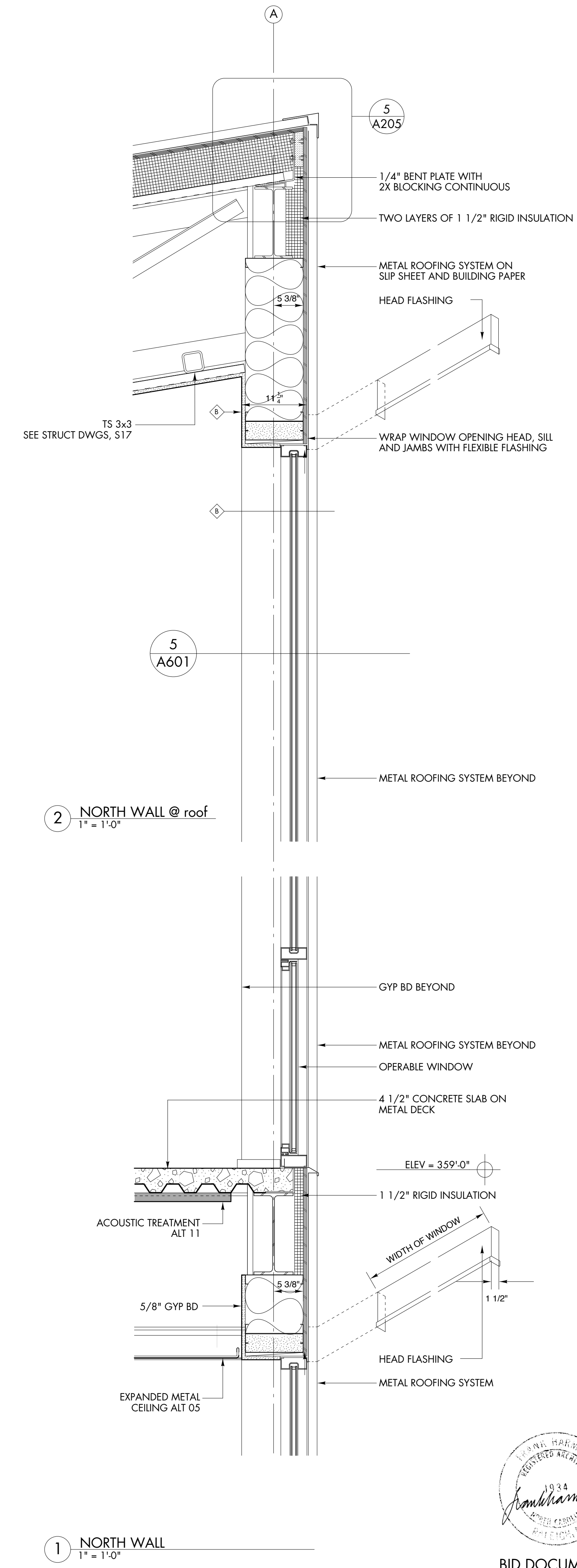


① ELEVATION south  
1/8" = 1'-0"



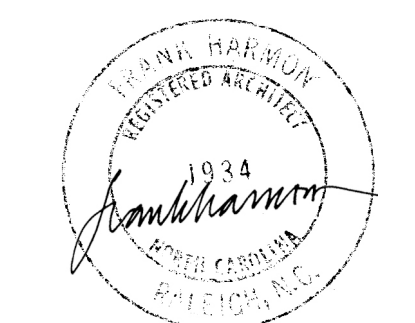
4 SOUTH EAVE/WALL  
1" = 1'-0"

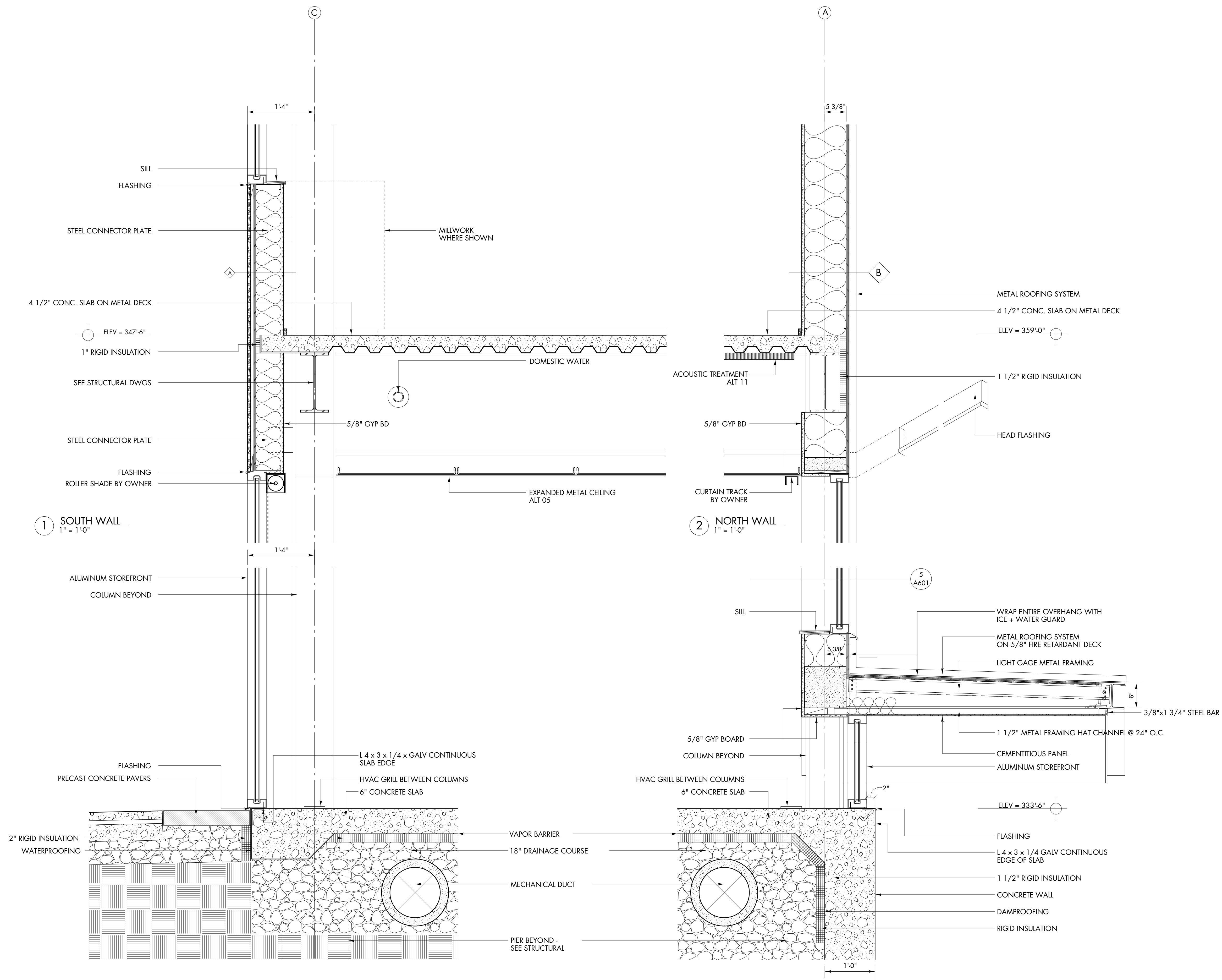
3 SOUTH WALL  
1" = 1'-0"



2 NORTH WALL @ roof  
1" = 1'-0"

1 NORTH WALL  
1" = 1'-0"





1 SOUTH WALL  
1" = 1'-0"

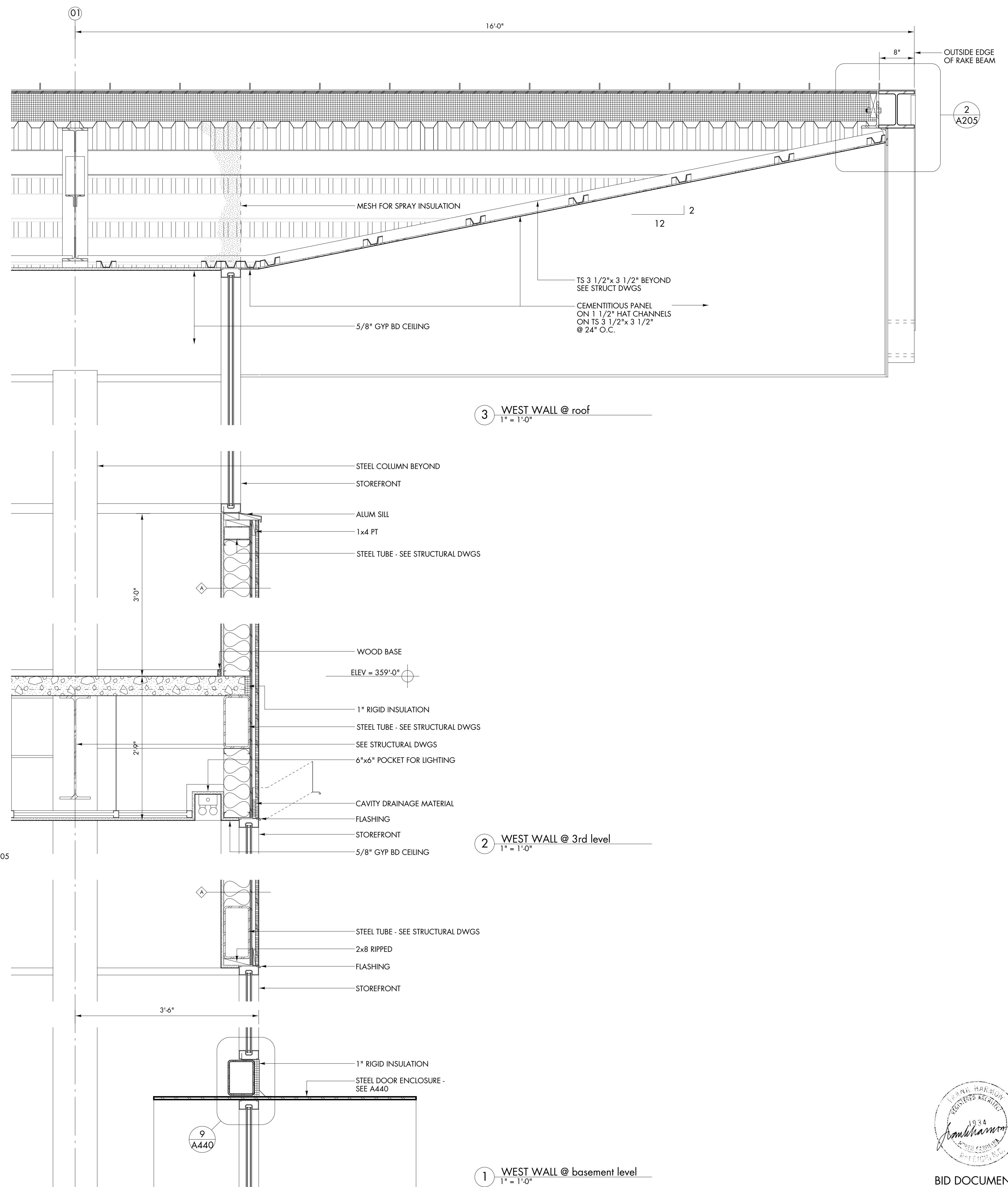
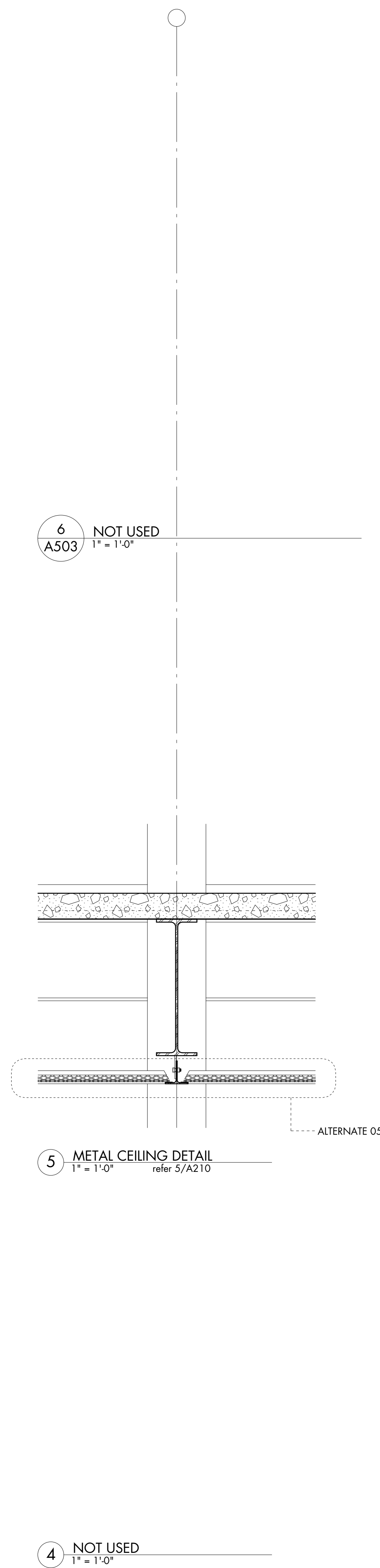
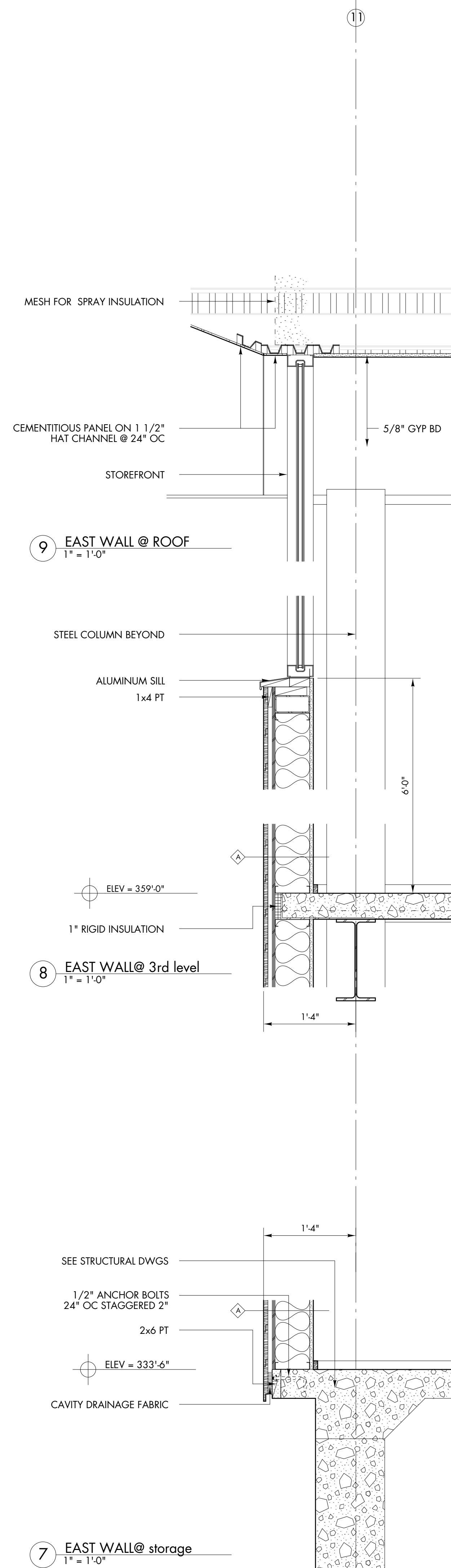
2 NORTH WALL  
1" = 1'-0"

3 NORTH WALL @ foundation wall  
1" = 1'-0"

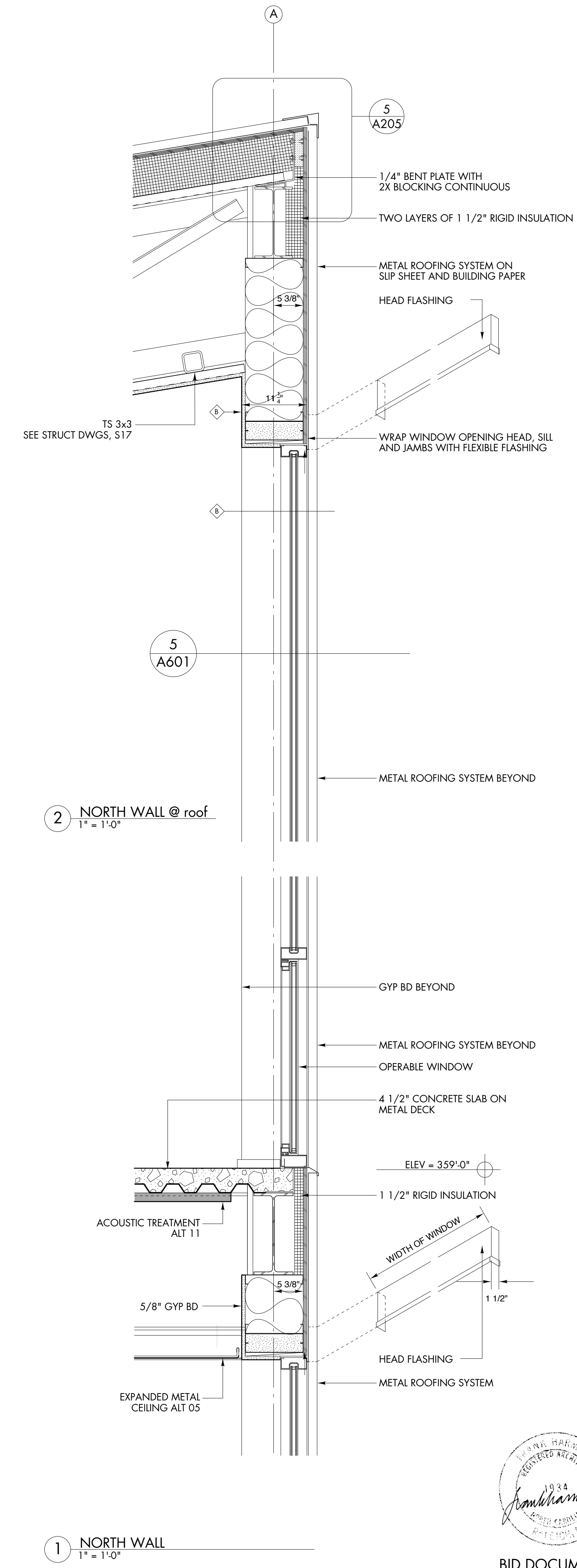
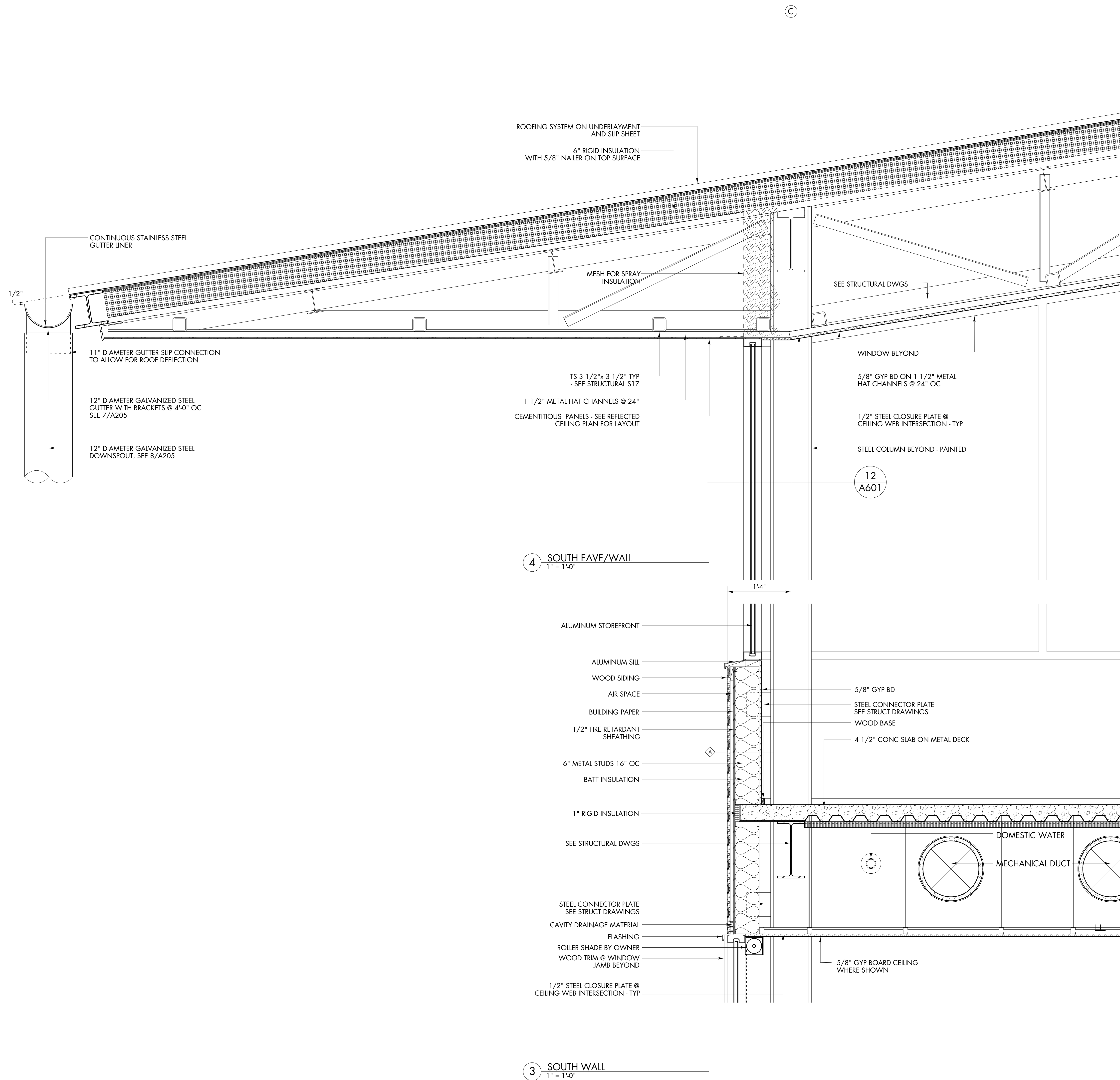
4 SOUTH WALL @ foundation wall  
1" = 1'-0"

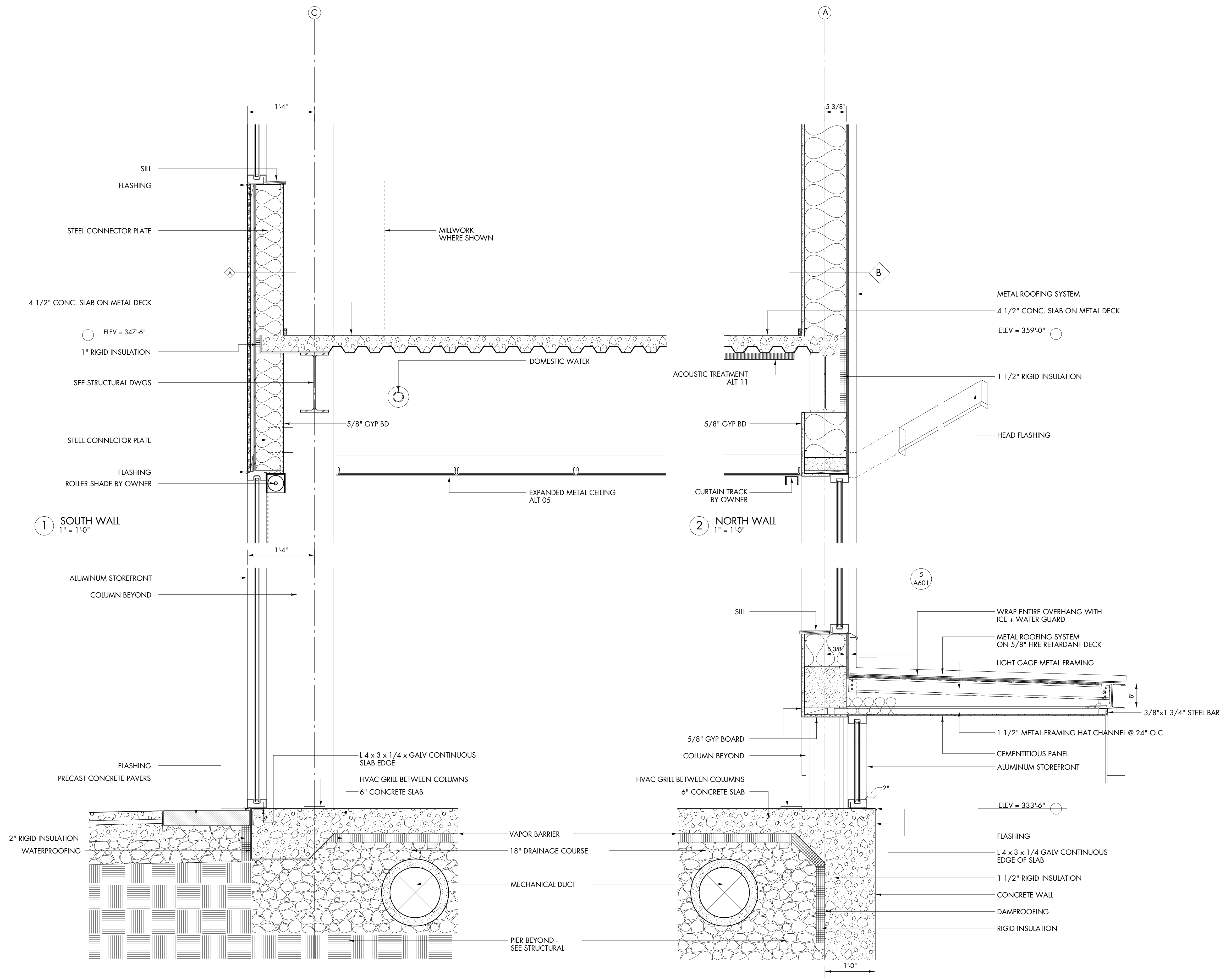






BID DOCUMENTS





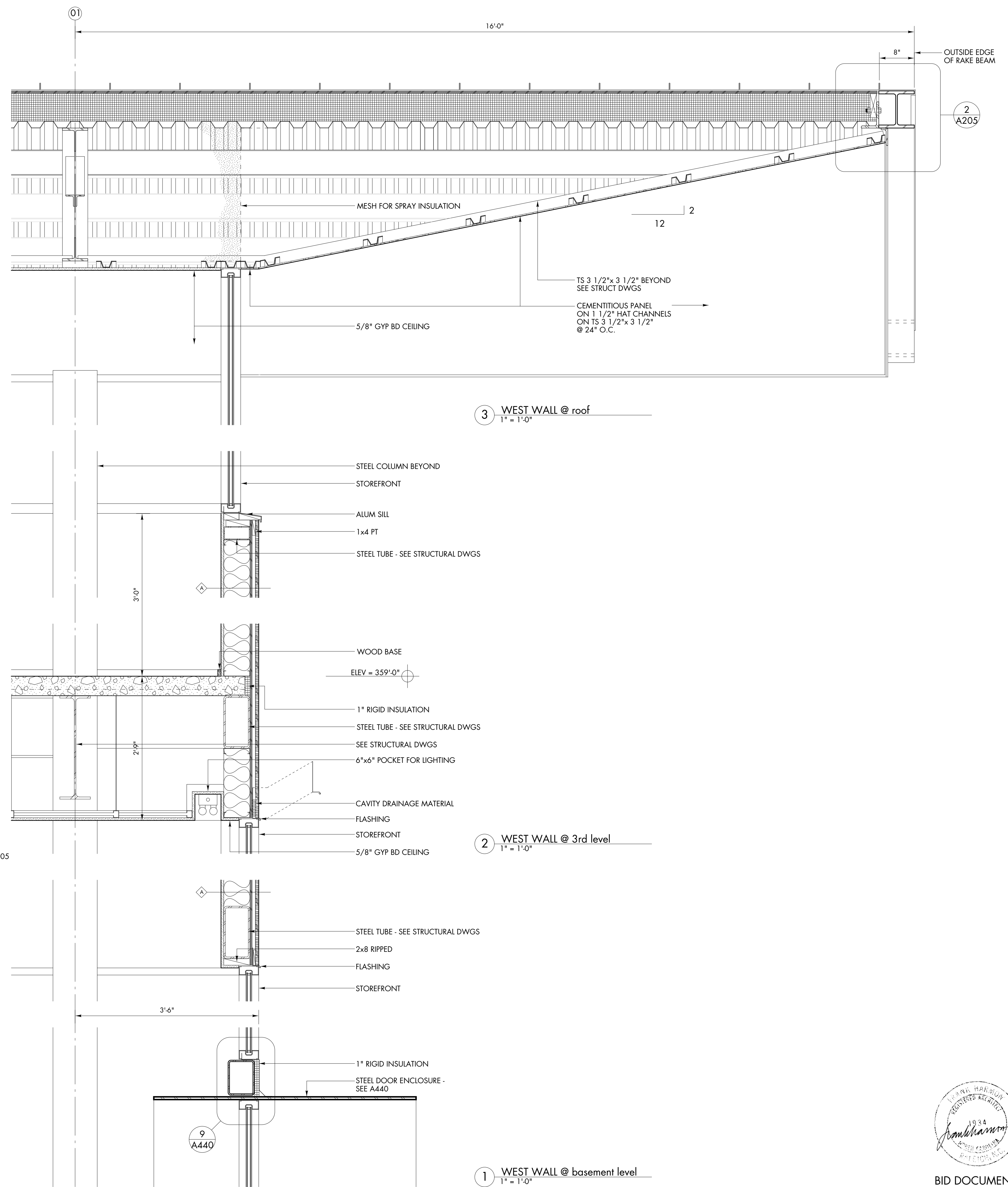
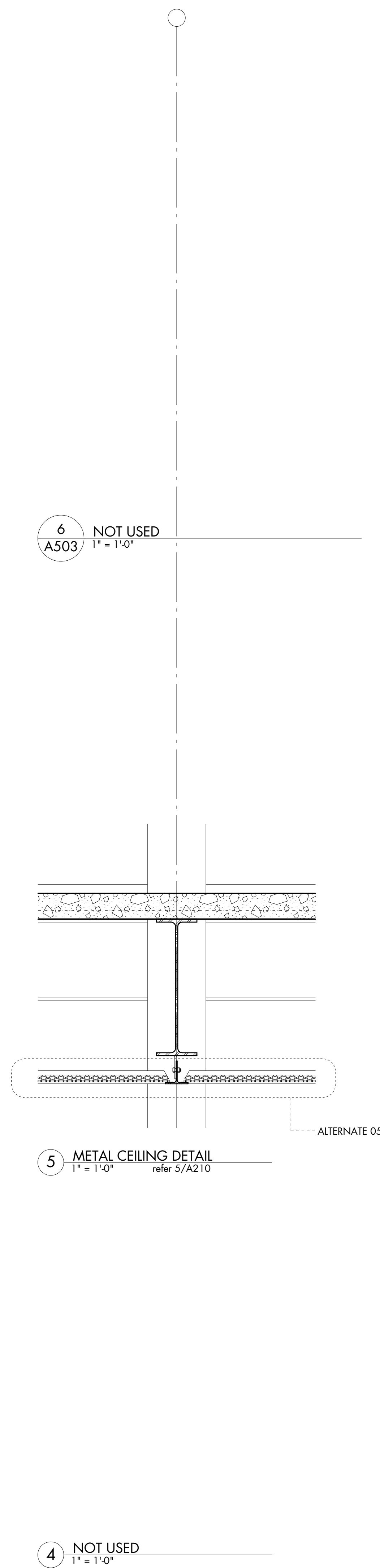
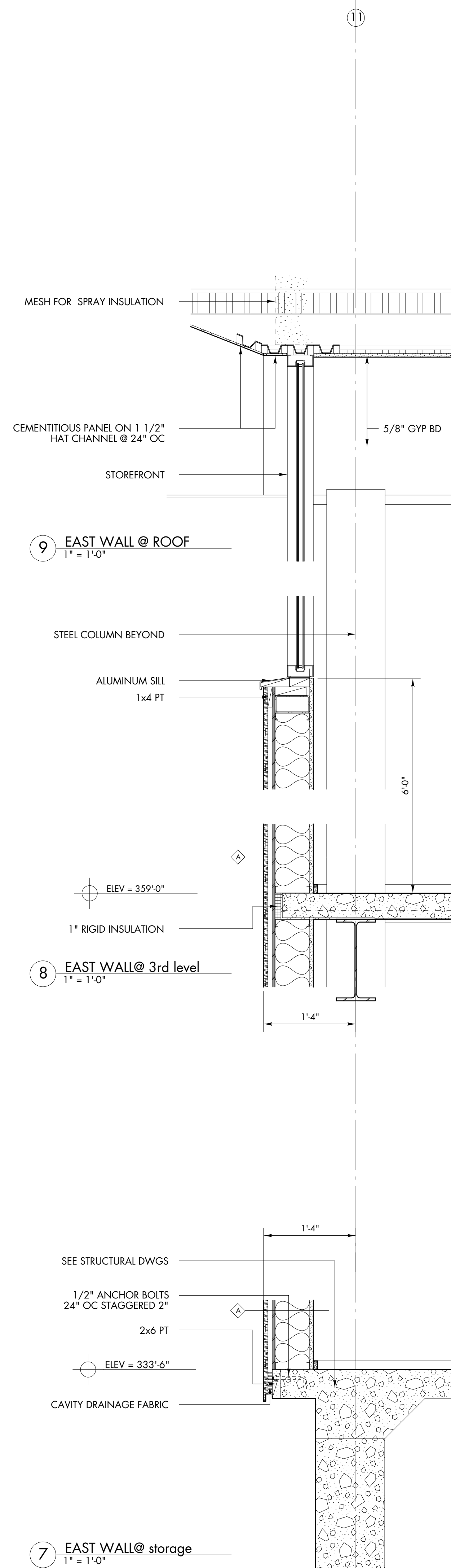
1 SOUTH WALL  
1" = 1'-0"

2 NORTH WALL  
1" = 1'-0"

3 NORTH WALL @ foundation wall  
1" = 1'-0"

4 SOUTH WALL @ foundation wall  
1" = 1'-0"





BID DOCUMENTS